



Physiology Case Presentations

Karim Al-Azizi, MD, FACC, FSCAI, FESC

Interventional Cardiology and Structural Heart Disease
Associate Program Director, Cardiology Fellowship
Baylor Scott & White Health - The Heart Hospital Plano
Clinical Assistant Professor
Texas A&M University College of Medicine

Disclosures

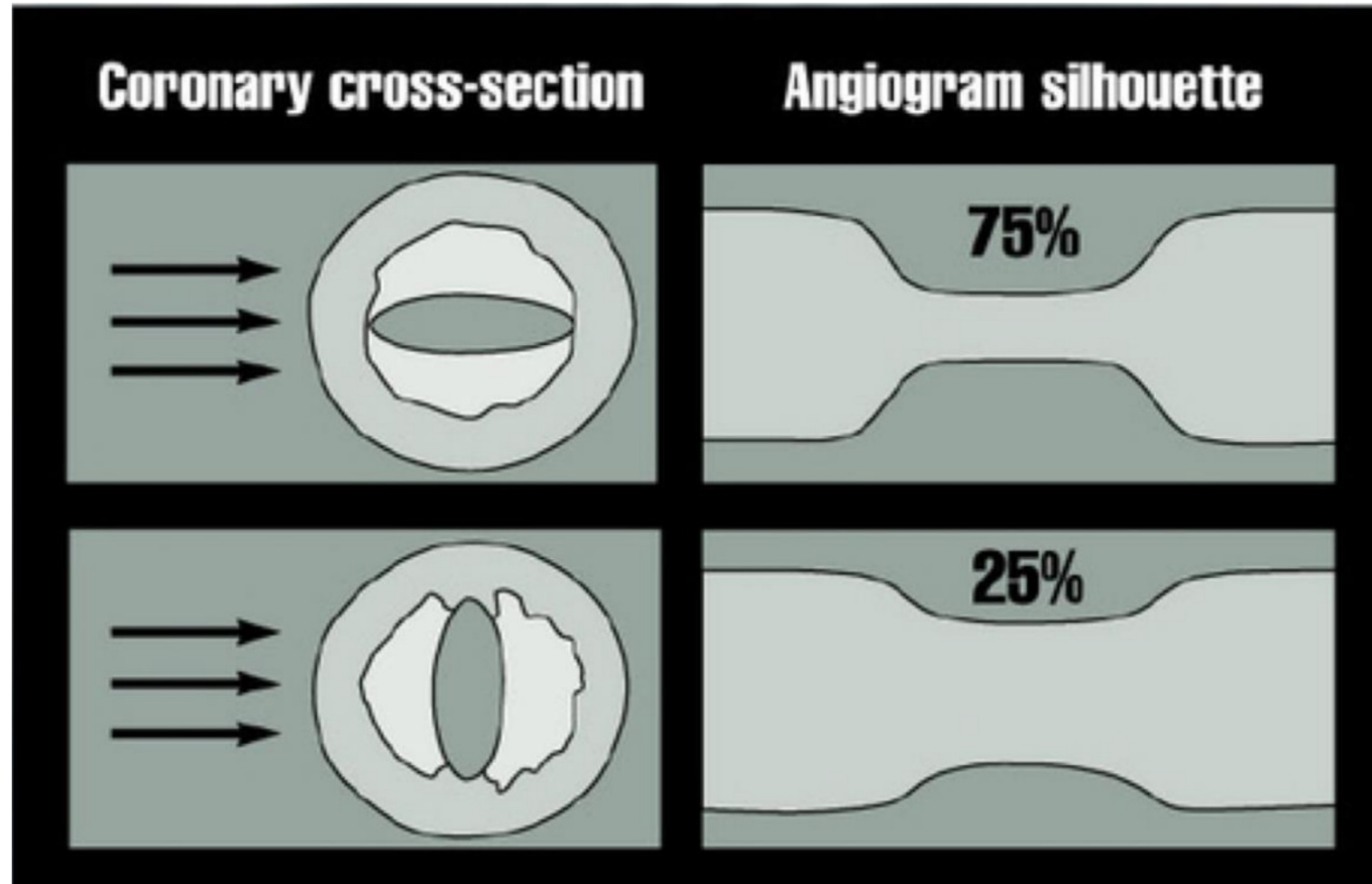
Philips Volcano – Consultant/Speaker Bureau

Edwards LifeSciences – Consultant/Proctor

Medtronic – Consultant/Speaker Bureau

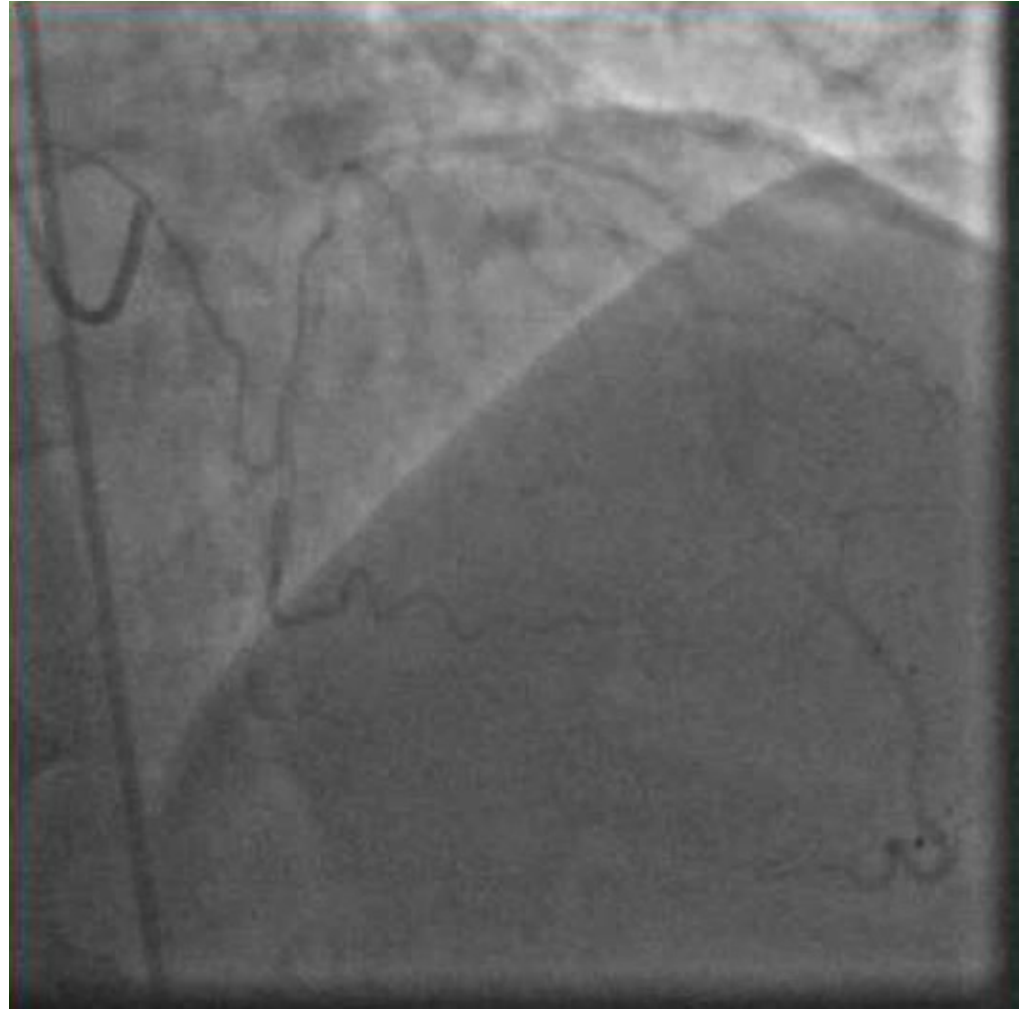
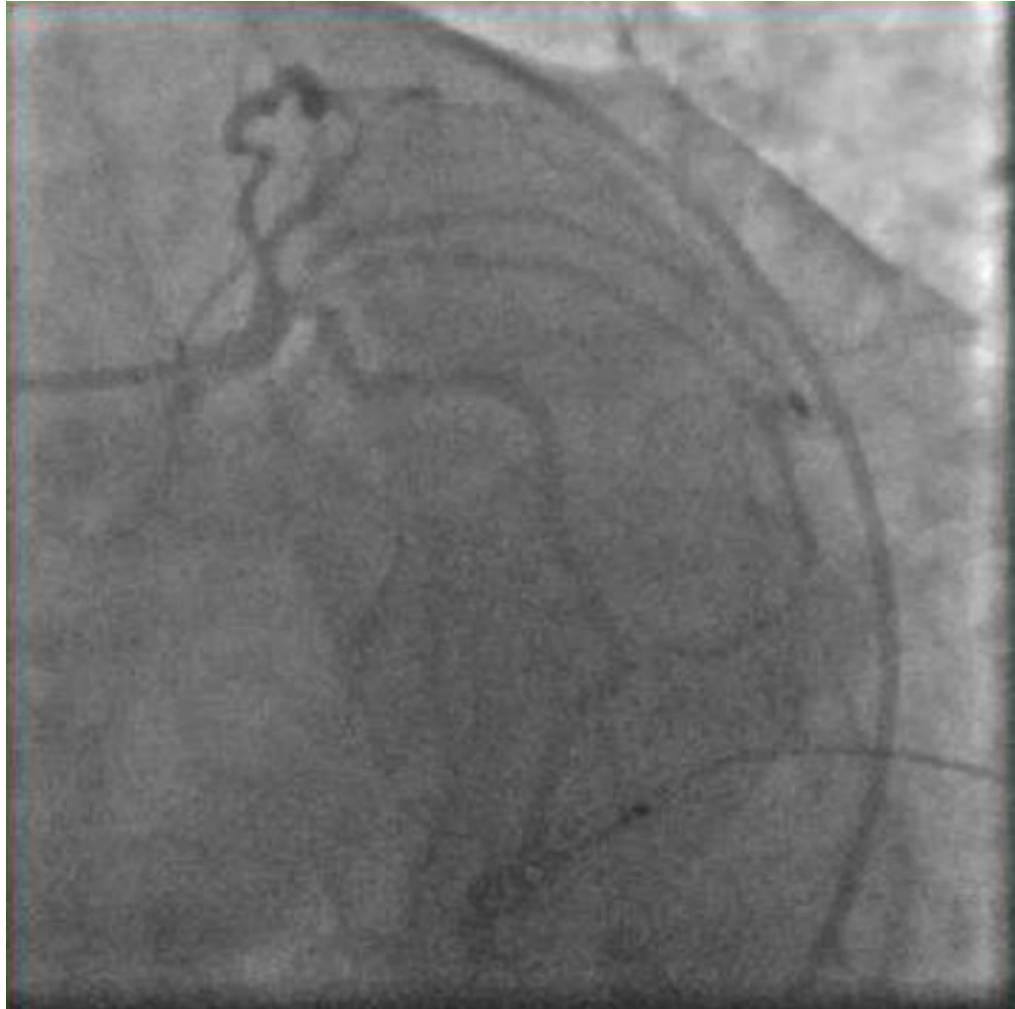
Boston Scientific – Advisory Board/Consultant

Shockwave – Consultant/Speaker Bureau



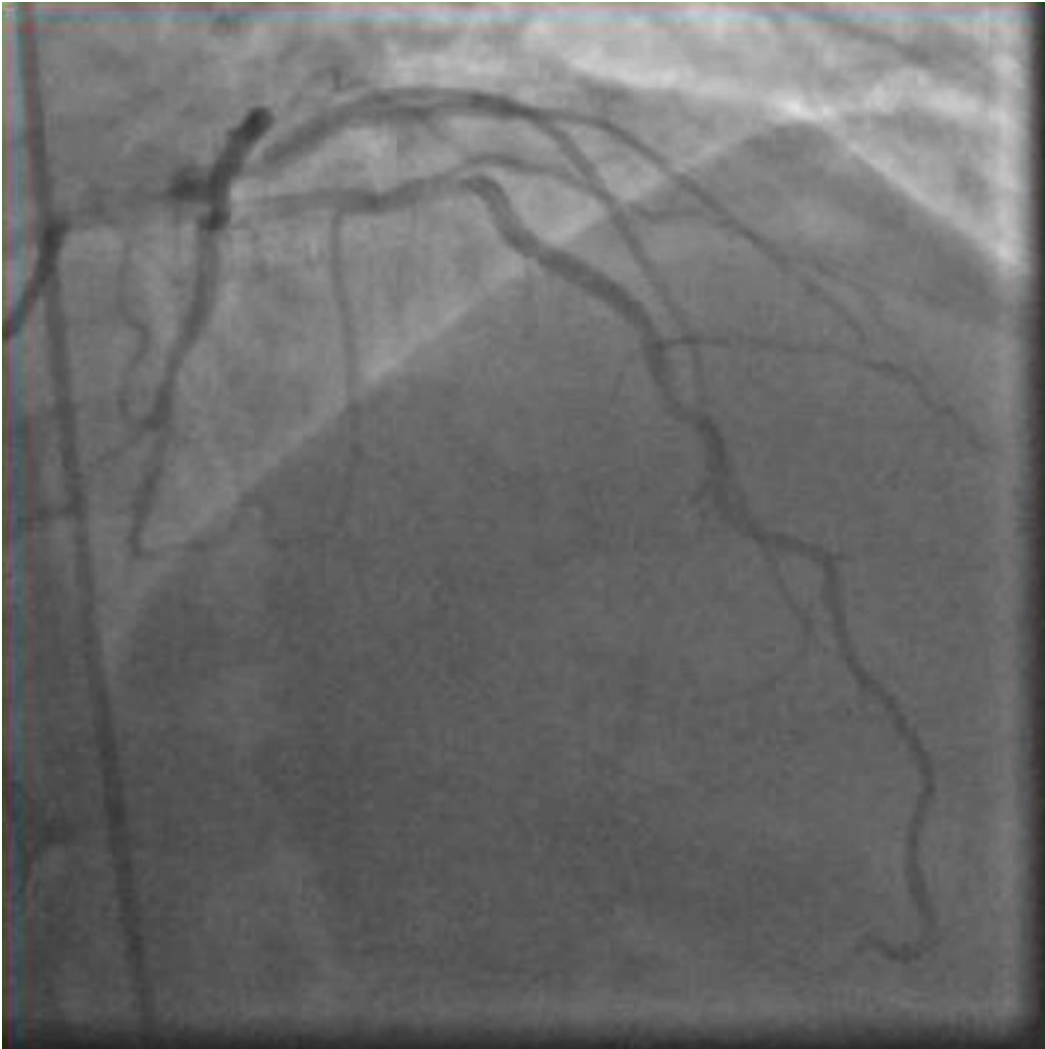
Case 1

- 72 yr old with CCS 4 symptoms for the last 2 weeks
- Nuc Stress test with antero-lateral wall ischemia
- On Toprol XL and Imdur
- Underwent cardiac catheterization at OSH, referred for CABG
Referred for Cardiac catheterization

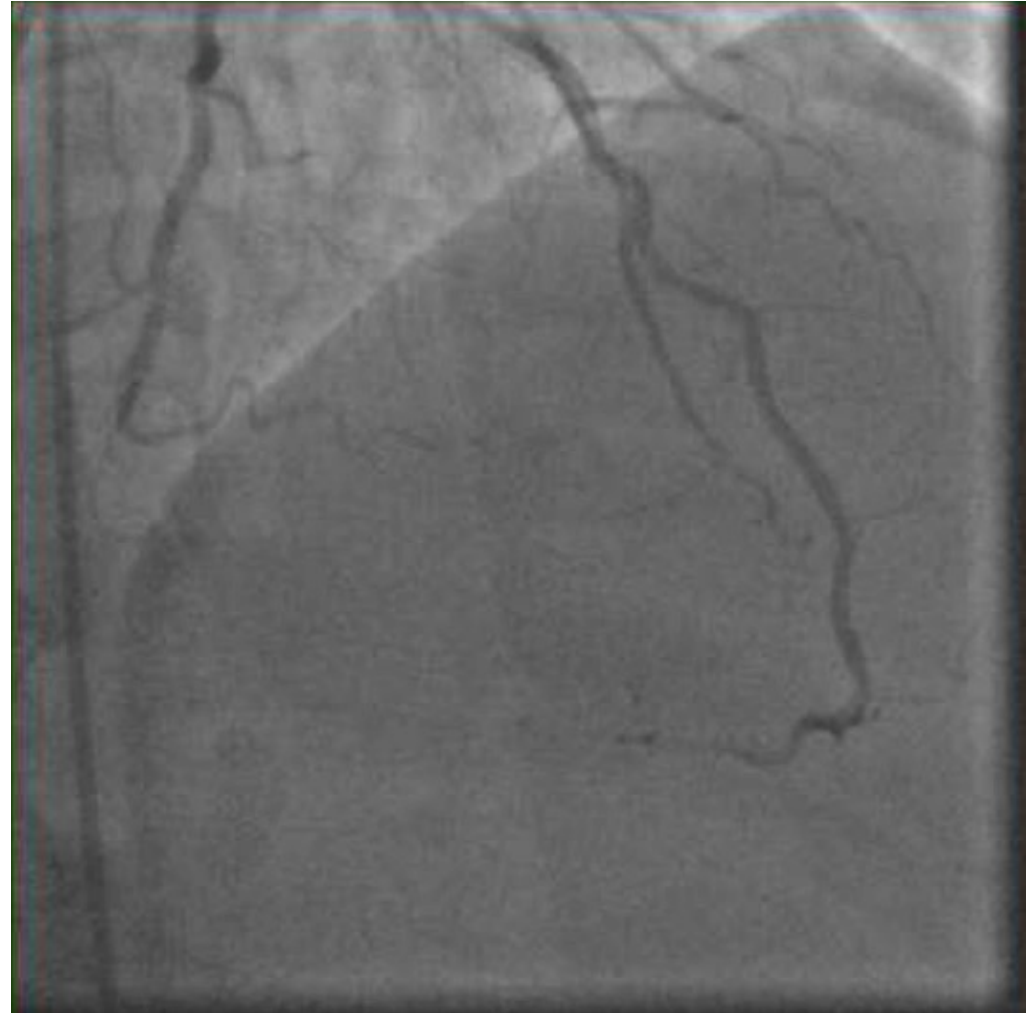
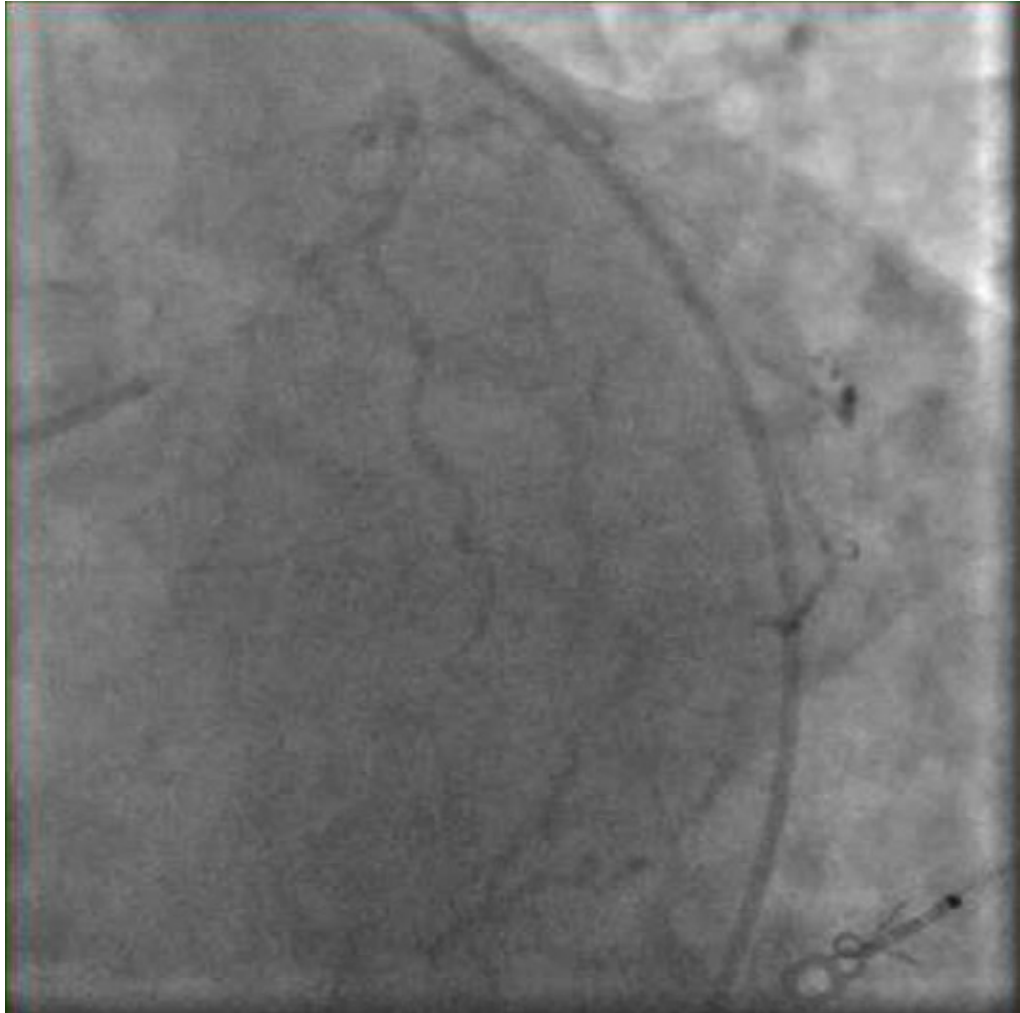




“PCI?
CABG?
Or investigate?”



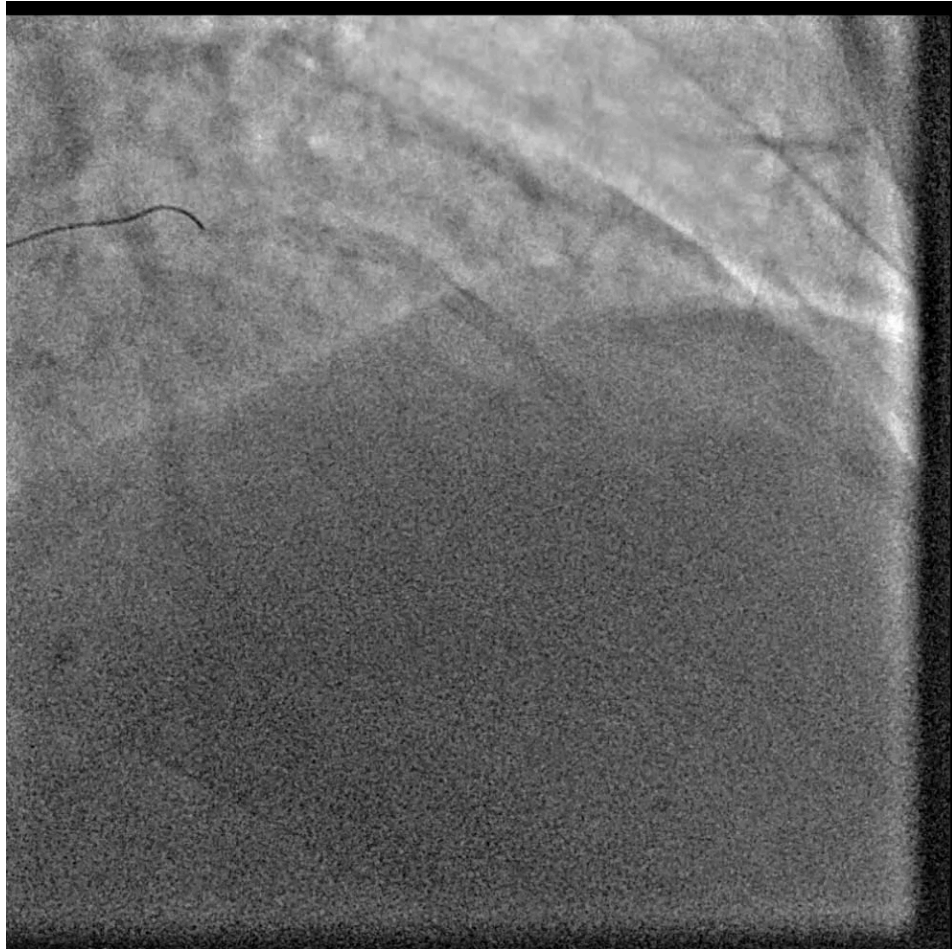
Post intervention....

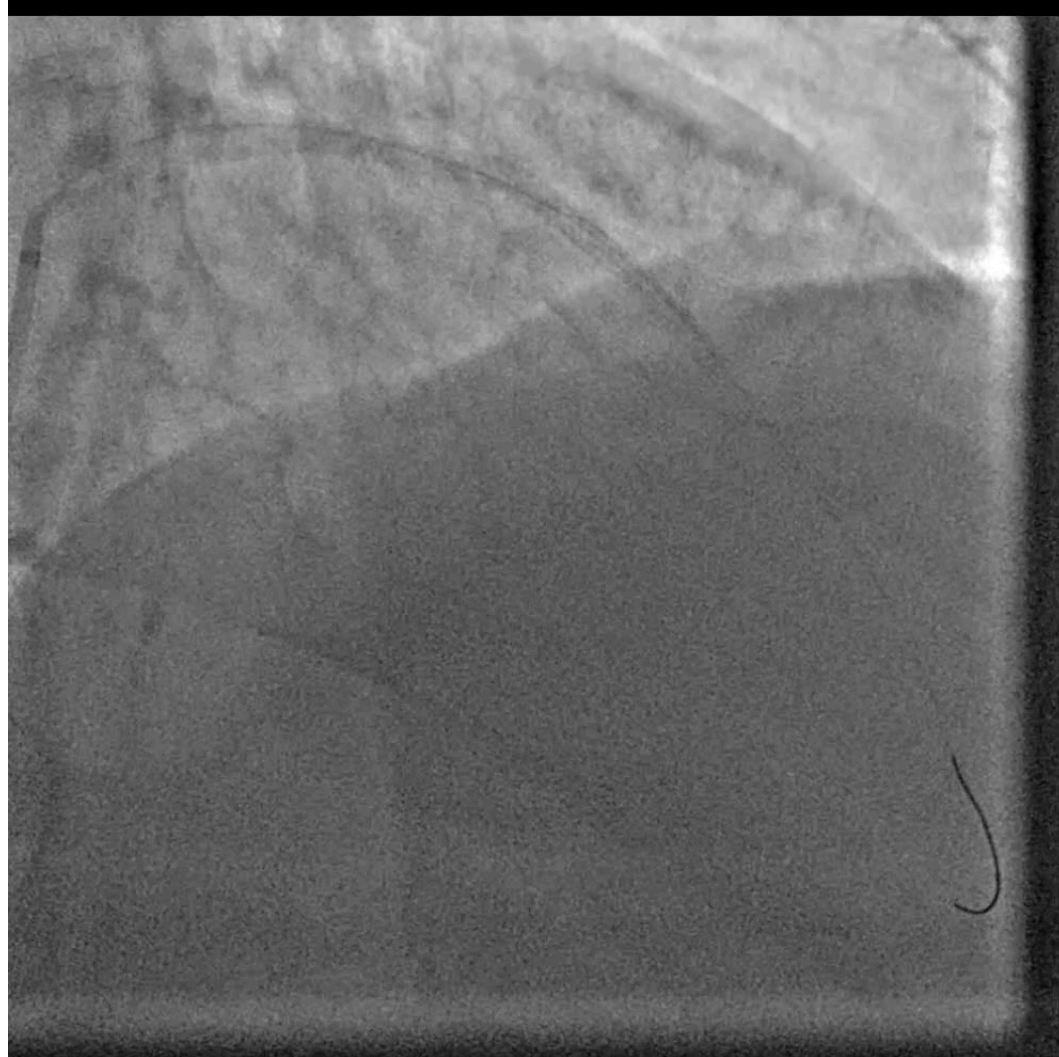


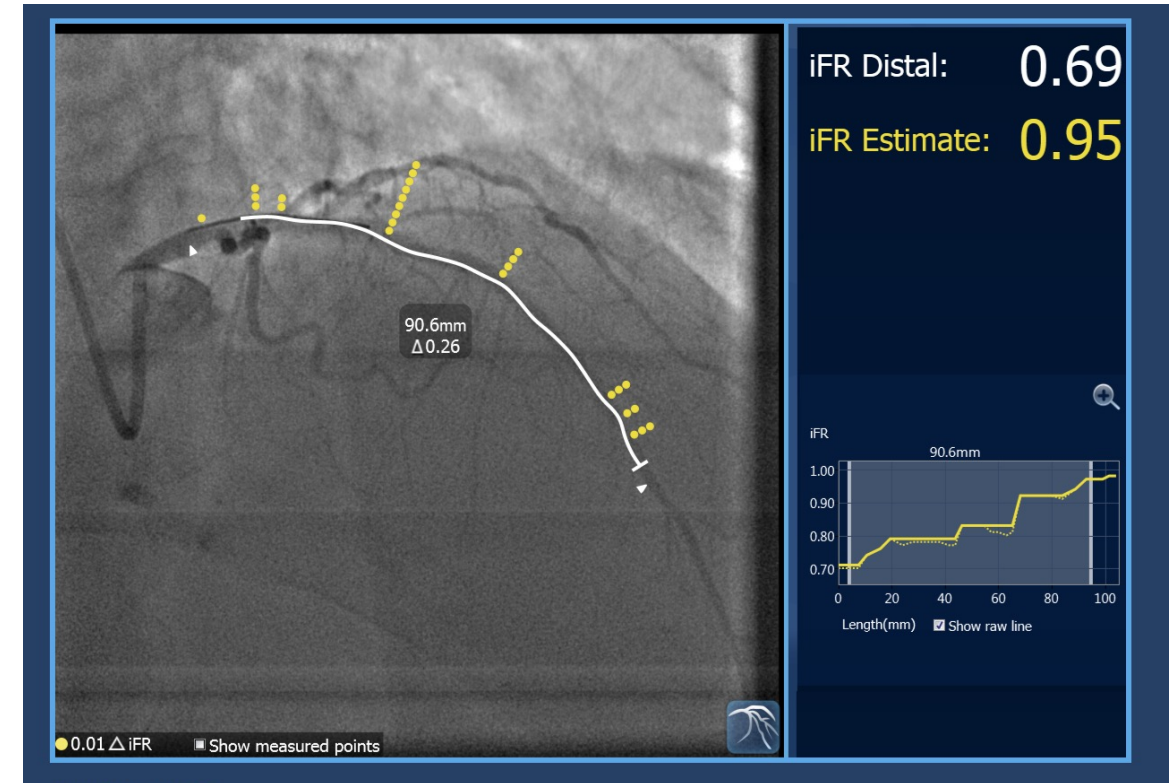
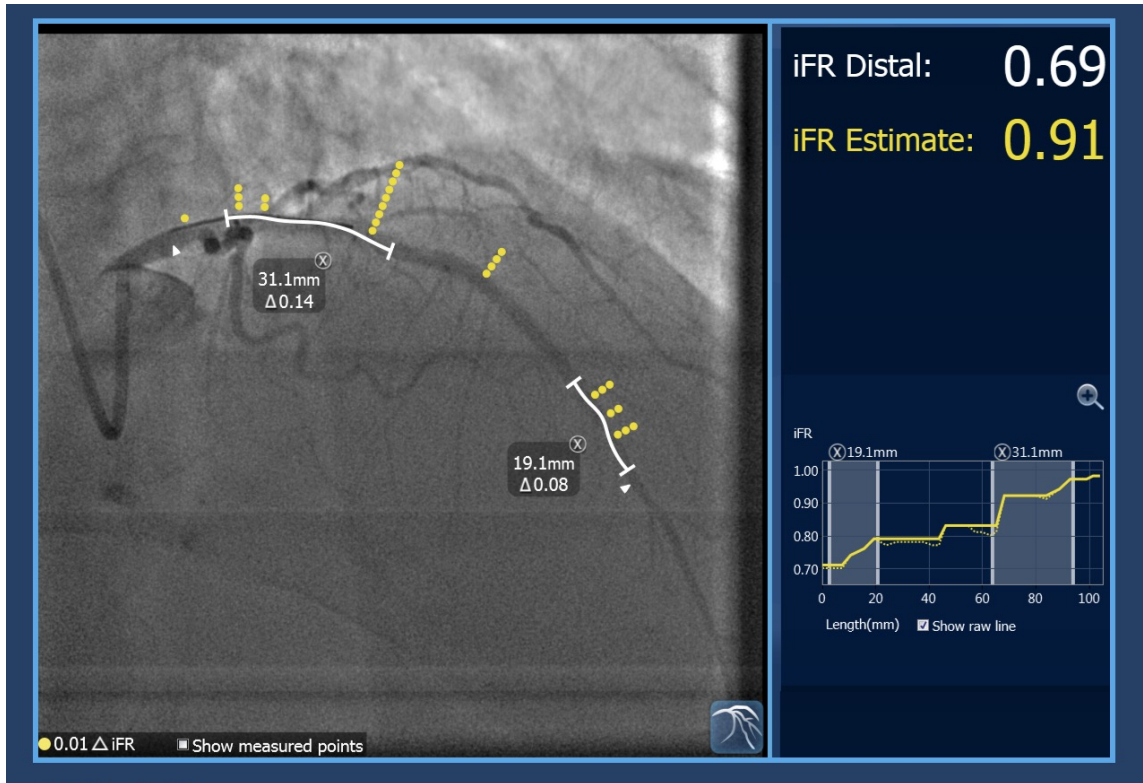
Case 2

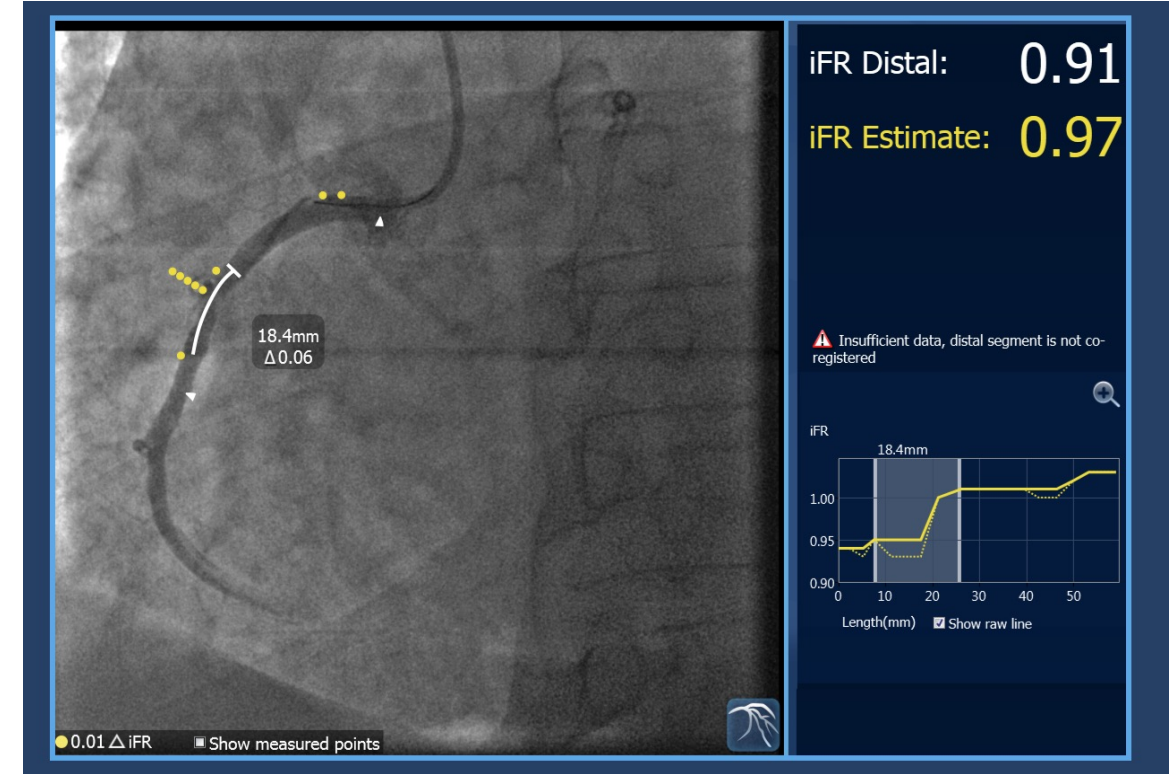
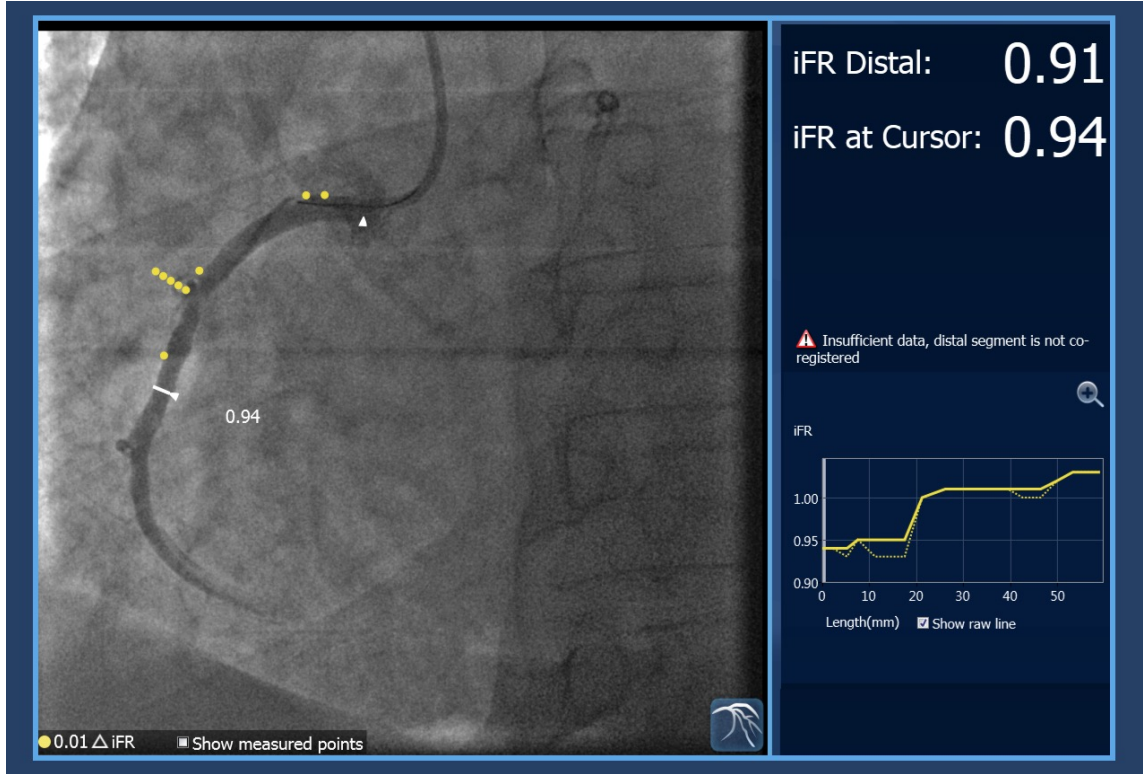
86 yr old gentleman

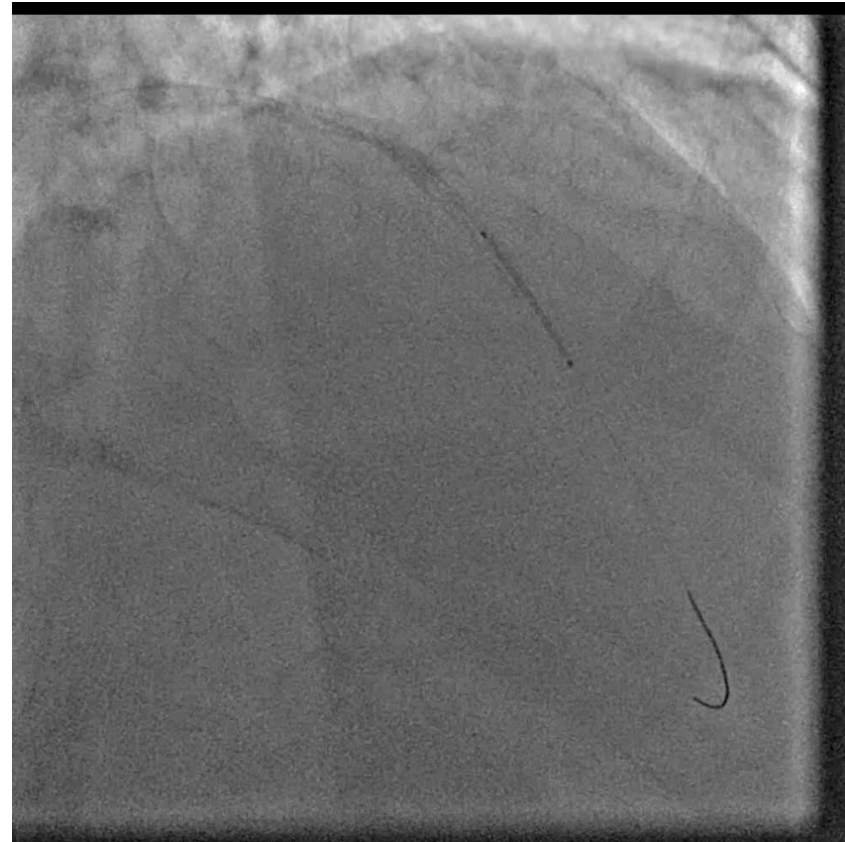
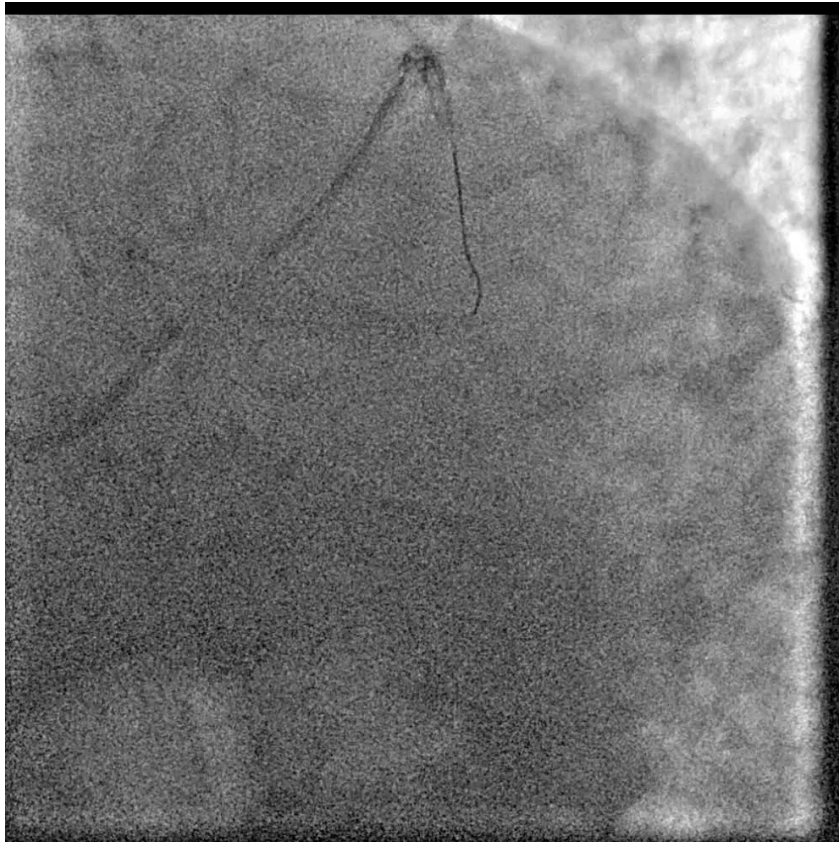
- DM on Insulin
- HTN
- DLD
- Known CAD multiple PCI to the LAD
- Admitted with unstable angina

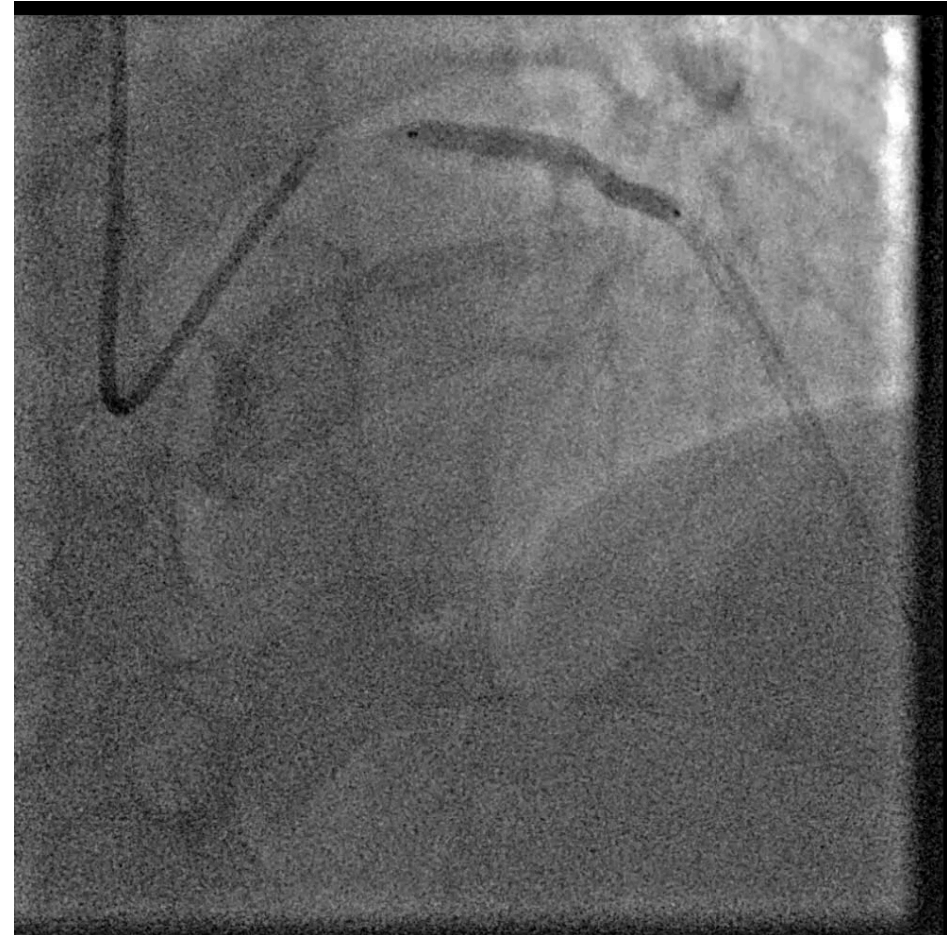
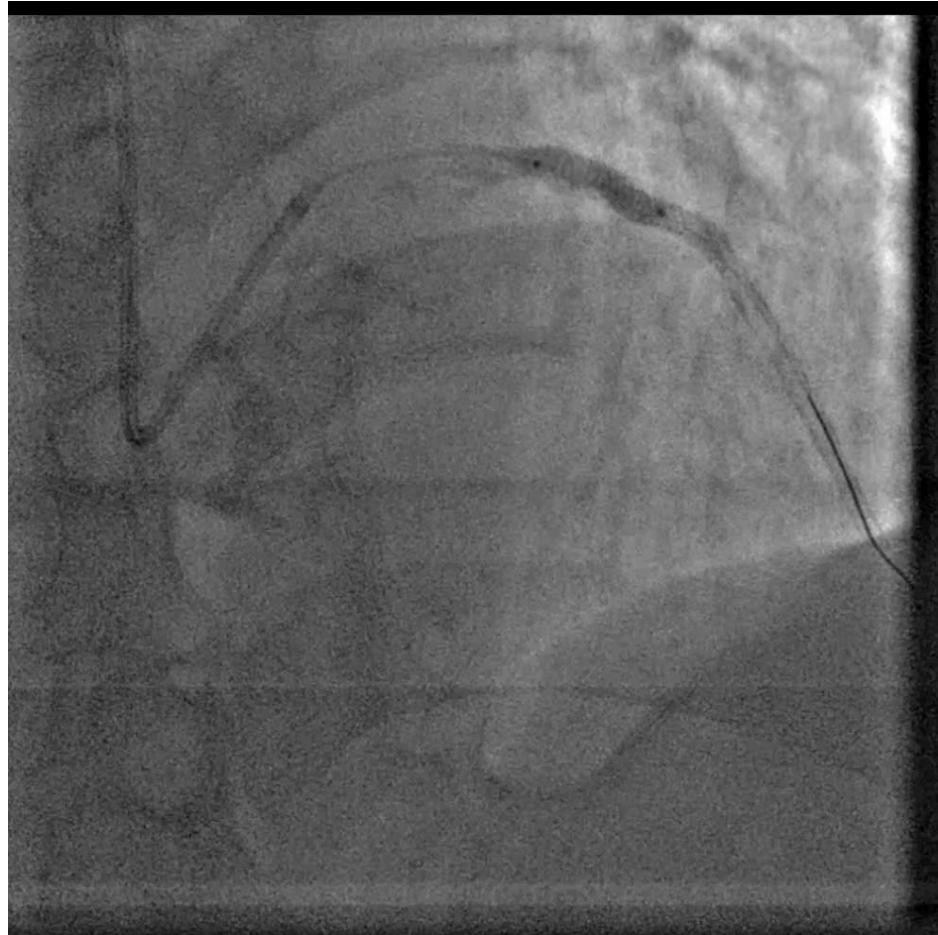


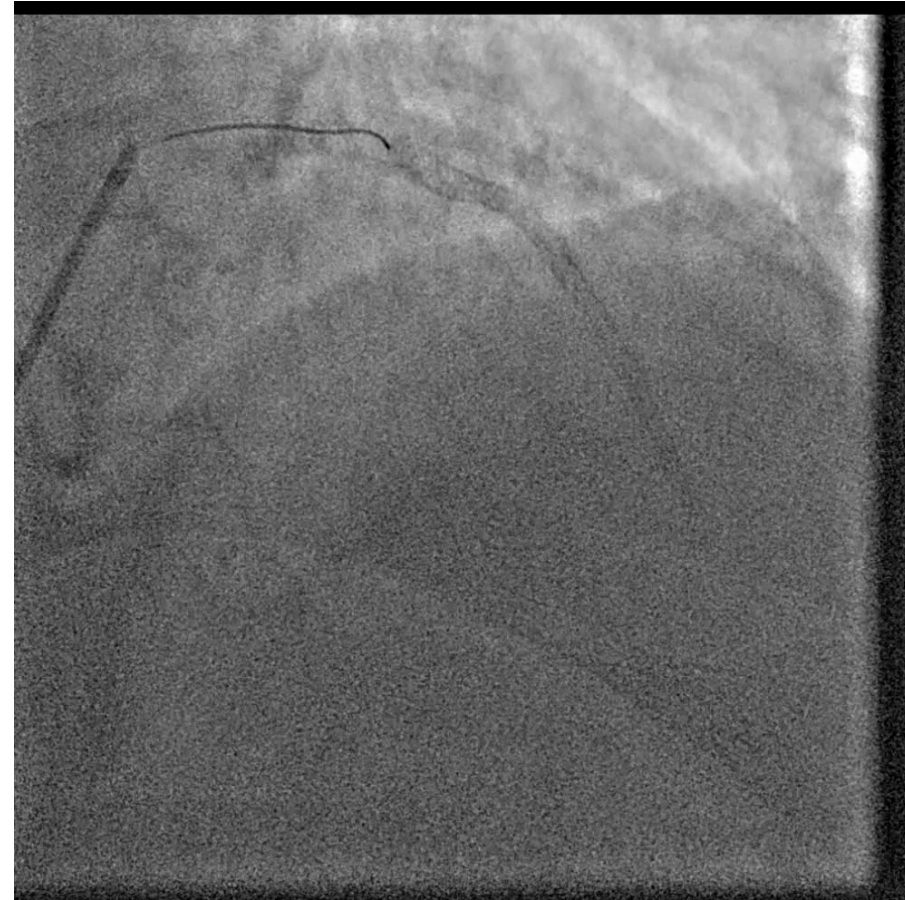
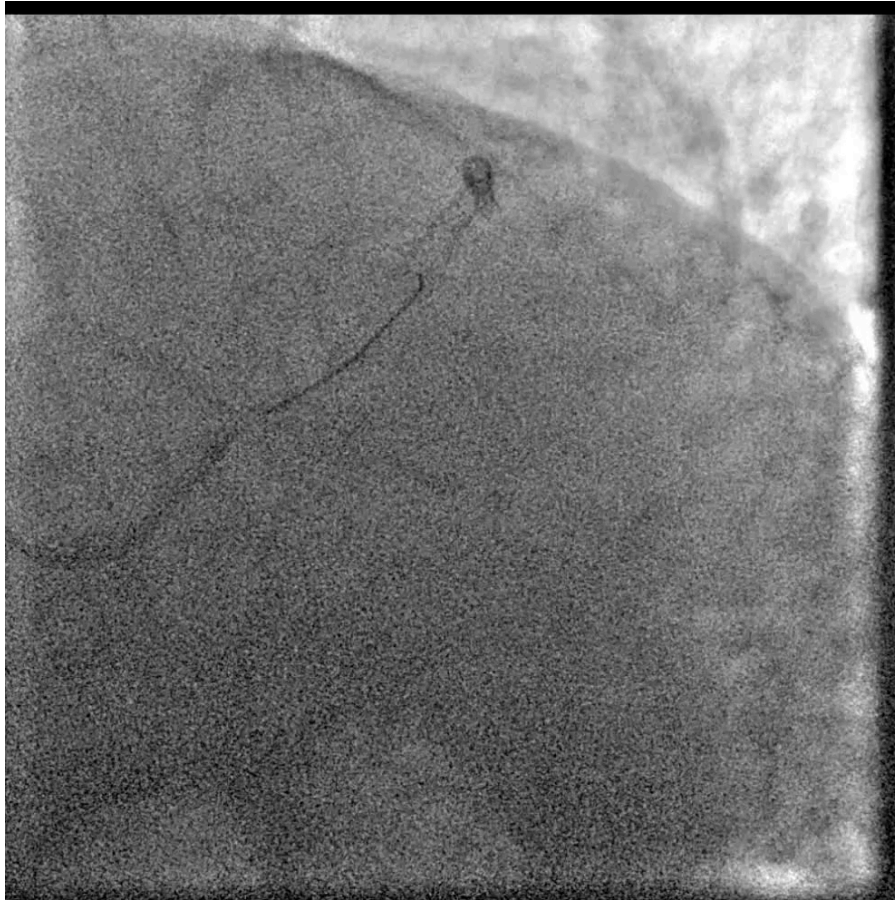








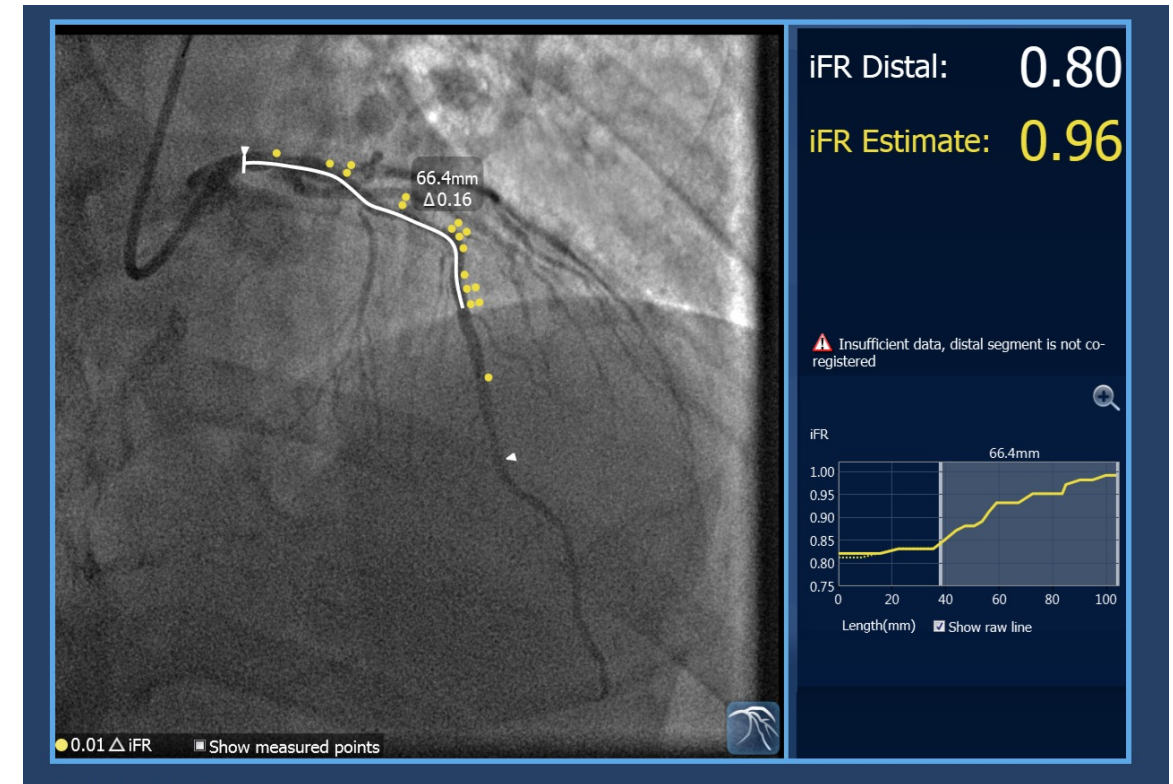
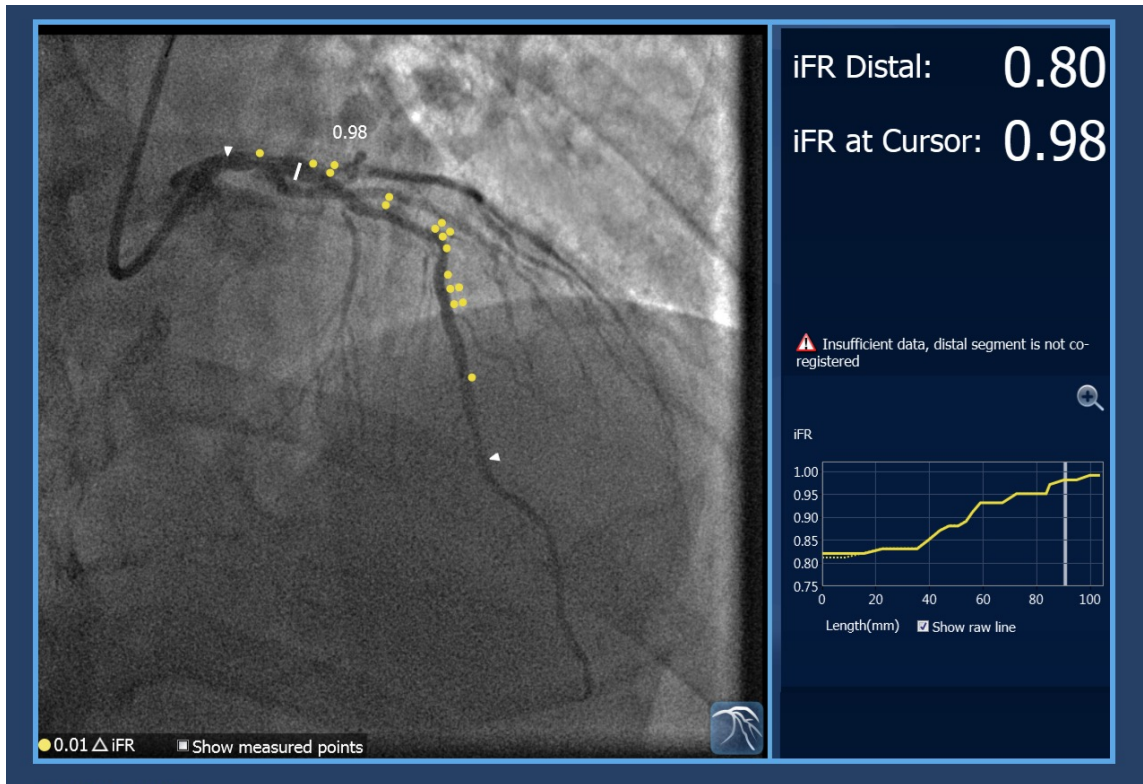




Case 3

58 Male with history of

- HTN
- DM-2
- CAD s/p PCI of RCA in the past
- Referred for a cardiac catheterization for a high risk stress test





Thank you!

 @kalazimmd

E-Mail: karim.alazizi@bswhealth.org

